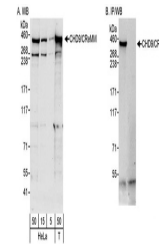


Product Datasheet

CHD9/CReMM Antibody (orb1528800)

Description	CHD9/CReMM Antibody
Species/Host	Rabbit
Reactivity	Human
Conjugation	Unconjugated
Tested Applications	IP, WB
Immunogen	Between 25 and 75
Target	CHD9/CReMM
Preservatives	Tris-citrate/phosphate buffer, pH 7 to 8 containing 0.09% Sodium Azide
Form/Appearance	Whole IgG
Concentration	1000 µg/ml
Storage	2 - 8°C
Note	For research use only
Application notes	Format: Whole IgG
Clonality	Polyclonal
Uniprot ID	Q3L8U1
NCBI	AAQ24287.1
Dilution Range	WB - 1:1,000 - 1:5,000; IP - 2 - 5 µg/mg lysate
Expiration Date	12 months from date of receipt.



Detection of human CHD9/CReMM by WB and ...