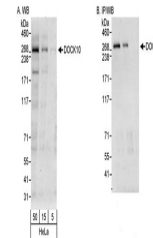


Product Datasheet

DOCK10 Antibody (orb1528643)

Description	DOCK10 Antibody
Species/Host	Rabbit
Reactivity	Human
Conjugation	Unconjugated
Tested Applications	IP, WB
Immunogen	Between 2136 and C-terminus
Target	DOCK10
Preservatives	Tris-citrate/phosphate buffer, pH 7 to 8 containing 0.09% Sodium Azide
Form/Appearance	Whole IgG
Concentration	1000 µg/ml
Storage	2 - 8°C
Note	For research use only
Application notes	Format: Whole IgG
Clonality	Polyclonal
Uniprot ID	Q96BY6
NCBI	NP_055504.2
Dilution Range	WB - 1:2,000 - 1:10,000; IP - 2 - 5 µg/mg lysate
Expiration Date	12 months from date of receipt.



Detection of human DOCK10 by WB and IP.S...