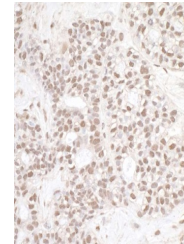


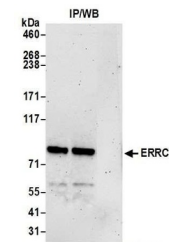
Product Datasheet

ERCC3 Antibody (orb1528587)

Description	ERCC3 Antibody
Species/Host	Rabbit
Reactivity	Human
Conjugation	Unconjugated
Tested Applications	IHC, IP
Immunogen	Between 575 and 625
Target	ERCC3
Preservatives	Tris-citrate/phosphate buffer, pH 7 to 8 containing 0.09% Sodium Azide
Form/Appearance	Whole IgG
Concentration	1000 µg/ml
Storage	2 - 8°C
Note	For research use only
Application notes	Format: Whole IgG
Clonality	Polyclonal
Uniprot ID	P19447
NCBI	NP_000113.1
Dilution Range	WB - Not recommended. Use rabbit anti-ERCC3 antibody A301-337A.; IP - 2 - 5 µg/mg lysate; IHC - 1:2,000 to 1:10,000. Epitope retrieval with citrate buffer pH6.0 is recommended for FFPE tissue sections.
Expiration Date	12 months from date of receipt.



Detection of human ERCC3 by immunohistoc...



Detection of human ERCC3 by western blot...