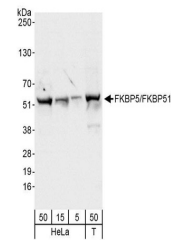


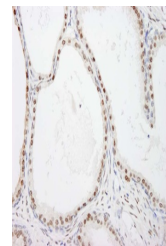
Product Datasheet

FKBP5/FKBP51 Antibody (orb1528410)

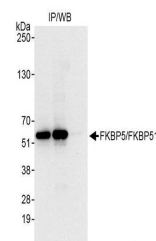
Description	FKBP5/FKBP51 Antibody
Species/Host	Rabbit
Reactivity	Human
Conjugation	Unconjugated
Tested Applications	IHC, IP, WB
Immunogen	Between 407 and C-terminus
Target	FKBP5/FKBP51
Preservatives	Tris-buffered Saline containing 0.1% rAlbumin and 0.09% Sodium Azide
Form/Appearance	Whole IgG
Concentration	200 µg/ml
Storage	2 - 8°C
Note	For research use only
Application notes	Format: Whole IgG
Clonality	Polyclonal
Uniprot ID	Q13451
NCBI	NP_004108.1
Dilution Range	WB - 1:2,000 - 1:10,000; IP - 2 - 5 µg/mg lysate; IHC - 1:200 - 1:1,000. Epitope retrieval with citrate buffer pH 6.0 is recommended for FFPE tissue sections.
Expiration Date	12 months from date of receipt.



Detection of human FKBP5/FKBP51 by western blot.



Detection of human FKBP5/FKBP51 by immunohistochemistry.



Detection of human FKBP5/FKBP51 by western blot.