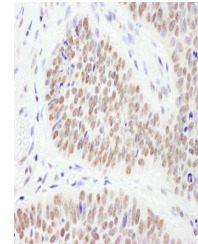


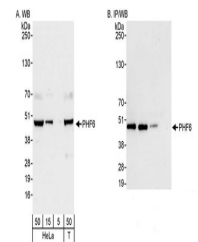
## Product Datasheet

### PHF6 Antibody (orb1528372)

|                            |  |
|----------------------------|--|
| <b>Description</b>         | PHF6 Antibody  |
| <b>Species/Host</b>        | Rabbit   |
| <b>Reactivity</b>          | Human  |
| <b>Conjugation</b>         | Unconjugated   |
| <b>Tested Applications</b> | IHC, IP, WB  |
| <b>Immunogen</b>           | Between 315 and C-terminus   |
| <b>Target</b>              | PHF6   |
| <b>Preservatives</b>       | Tris-buffered Saline containing 0.1% rAlbumin and 0.09% Sodium Azide   |
| <b>Form/Appearance</b>     | Whole IgG  |
| <b>Concentration</b>       | 200 µg/ml  |
| <b>Storage</b>             | 2 - 8°C  |
| <b>Note</b>                | For research use only  |
| <b>Application notes</b>   | Format: Whole IgG  |
| <b>Clonality</b>           | Polyclonal   |
| <b>Uniprot ID</b>          | <a href="#">Q8IWS0</a>   |
| <b>NCBI</b>                | <a href="#">NP_115834.1</a>  |
| <b>Dilution Range</b>      | WB - 1:2,000 - 1:10,000; IP - 2 - 5 µg/mg lysate; IHC - 1:100 - 1:500. Epitope retrieval with citrate buffer pH 6.0 is recommended for FFPE tissue sections. |
| <b>Expiration Date</b>     | 12 months from date of receipt.  |



Detection of human PHF6 by immunohistoch...



Detection of human PHF6 by WB and IP.Sam...