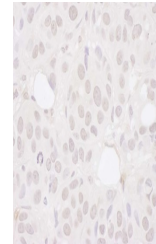


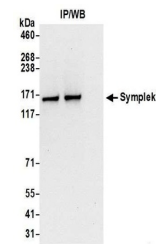
Product Datasheet

Symplekin Antibody (orb1528349)

Description	Symplekin Antibody
Species/Host	Rabbit
Reactivity	Human
Conjugation	Unconjugated
Tested Applications	IHC, IP
Immunogen	Between 200 and 250
Target	Symplekin
Preservatives	Tris-citrate/phosphate buffer, pH 7 to 8 containing 0.09% Sodium Azide
Form/Appearance	Whole IgG
Concentration	1000 µg/ml
Storage	2 - 8°C
Note	For research use only
Application notes	Format: Whole IgG
Clonality	Polyclonal
Uniprot ID	Q92797
NCBI	NP_004810.2
Dilution Range	WB - Not recommended. Use rabbit anti-Symplekin antibody A301-464A or A301-465A.; IP - 2 - 10 µg/mg lysate; IHC - 1:500 - 1:2,000. Epitope retrieval with Tris-EDTA pH 9.0 is recommended for FFPE tissue sections.
Expiration Date	12 months from date of receipt.



Detection of human Symplekin by immunohi...



Detection of human Symplekin by western ...