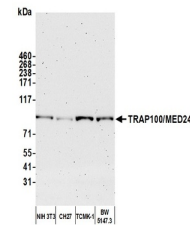


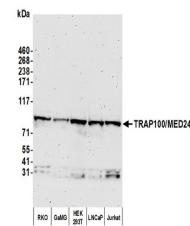
## Product Datasheet

# TRAP100/MED24 Antibody (orb1528334)

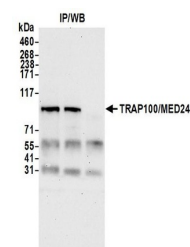
|                            |  |
|----------------------------|--|
| <b>Description</b>         | TRAP100/MED24 Antibody   |
| <b>Species/Host</b>        | Rabbit   |
| <b>Reactivity</b>          | Human, Mouse   |
| <b>Conjugation</b>         | Unconjugated   |
| <b>Tested Applications</b> | IP, WB   |
| <b>Immunogen</b>           | Between 939 and C-terminus   |
| <b>Target</b>              | TRAP100/MED24  |
| <b>Preservatives</b>       | Tris-citrate/phosphate buffer, pH 7 to 8 containing 0.09% Sodium Azide |
| <b>Form/Appearance</b>     | Whole IgG  |
| <b>Concentration</b>       | 1000 µg/ml   |
| <b>Storage</b>             | 2 - 8°C  |
| <b>Note</b>                | For research use only  |
| <b>Application notes</b>   | Format: Whole IgG  |
| <b>Clonality</b>           | Polyclonal   |
| <b>Uniprot ID</b>          | <a href="#">O75448</a>   |
| <b>NCBI</b>                | <a href="#">NP_055630.2</a>  |
| <b>Dilution Range</b>      | WB - 1:1,000 - 1:5,000; IP - 2 - 10 µg/mg lysate                       |
| <b>Expiration Date</b>     | 12 months from date of receipt.  |



Detection of mouse TRAP100/MED24 by west...



Detection of human TRAP100/MED24 by west...



Detection of human TRAP100/MED24 by west...