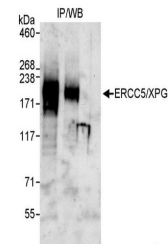


Product Datasheet

ERCC5/XPG Antibody (orb1528313)

Description	ERCC5/XPG Antibody
Species/Host	Rabbit
Reactivity	Human
Conjugation	Unconjugated
Tested Applications	IP
Immunogen	Between 1136 and C-terminus
Target	ERCC5/XPG
Preservatives	Tris-citrate/phosphate buffer, pH 7 to 8 containing 0.09% Sodium Azide
Form/Appearance	Whole IgG
Concentration	1000 µg/ml
Storage	2 - 8°C
Note	For research use only
Application notes	Format: Whole IgG
Clonality	Polyclonal
Uniprot ID	P28715
NCBI	NP_000114.2
Dilution Range	WB - Not recommended. Use rabbit anti-ERCC5/XPG antibody A301-484A.; IP - 2 - 5 µg/mg lysate
Expiration Date	12 months from date of receipt.



Detection of human ERCC5/XPG by western ...