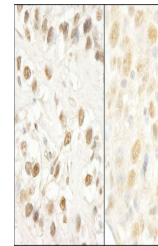


Product Datasheet

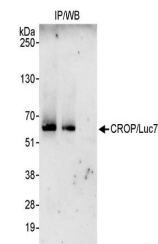
CROP/Luc7A Antibody (orb1528291)

| | |
|----------------------------|---|
| Description | CROP/Luc7A Antibody |
| Species/Host | Rabbit |
| Reactivity | Human |
| Conjugation | Unconjugated |
| Tested Applications | IHC, IP |
| Immunogen | Between 1 and 50 |
| Target | CROP/Luc7A |
| Preservatives | Tris-citrate/phosphate buffer, pH 7 to 8 containing 0.09% Sodium Azide |
| Form/Appearance | Whole IgG |
| Concentration | 1000 µg/ml |
| Storage | 2 - 8°C |
| Note | For research use only |
| Application notes | Format: Whole IgG |
| Clonality | Polyclonal |
| Uniprot ID | O95232 |
| NCBI | NP_057508.2 |
| Dilution Range | WB - Not recommended. orb1528291 has not performed satisfactorily when used for WB of CROP/Luc7A in crude preparations (e.g. whole cell lysate). This antibody can be used for WB of enriched (e.g. immunoprecipitated) sources of CROP/Luc7A.; IP - 2 - 5 µg/mg lysate; IHC - 1:500 - 1:2,000. Epitope retrieval with citrate buffer pH 6.0 is recommended for FFPE tissue sections. |
| Expiration Date | 12 months from date of receipt. |



Detection of human and mouse CROP/Luc7A

...



Detection of human CROP/Luc7A by western...