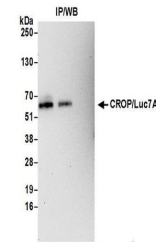


Product Datasheet

CROP/Luc7A Antibody (orb1528289)

Description	CROP/Luc7A Antibody
Species/Host	Rabbit
Reactivity	Human
Conjugation	Unconjugated
Tested Applications	IP
Immunogen	Between 225 and 275
Target	CROP/Luc7A
Preservatives	Tris-citrate/phosphate buffer, pH 7 to 8 containing 0.09% Sodium Azide
Form/Appearance	Whole IgG
Concentration	1000 µg/ml
Storage	2 - 8°C
Note	For research use only
Application notes	Format: Whole IgG
Clonality	Polyclonal
Uniprot ID	O95232
NCBI	NP_057508.2
Dilution Range	WB - Not recommended; IP - 2 - 5 µg/mg lysate
Expiration Date	12 months from date of receipt.



Detection of human CROP/Luc7A by western...