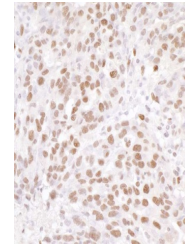


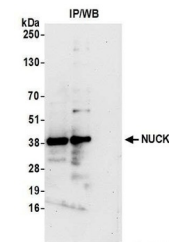
## Product Datasheet

### NUCKS Antibody (orb1528273)

<b>Description</b>	NUCKS Antibody
<b>Species/Host</b>	Rabbit
<b>Reactivity</b>	Human
<b>Conjugation</b>	Unconjugated
<b>Tested Applications</b>	IHC, IP
<b>Immunogen</b>	Between 193 and C-terminus
<b>Target</b>	NUCKS
<b>Preservatives</b>	Tris-citrate/phosphate buffer, pH 7 to 8 containing 0.09% Sodium Azide
<b>Form/Appearance</b>	Whole IgG
<b>Concentration</b>	1000 µg/ml
<b>Storage</b>	2 - 8°C
<b>Note</b>	For research use only
<b>Application notes</b>	Format: Whole IgG
<b>Clonality</b>	Polyclonal
<b>Uniprot ID</b>	<a href="#">Q9H1E3</a>
<b>NCBI</b>	<a href="#">NP_073568.2</a>
<b>Dilution Range</b>	WB - Not recommended. orb1528273 has not performed satisfactorily when used for WB of NUCKS in crude preparations (e.g. whole cell lysate). This antibody can be used for WB of enriched (e.g. immunoprecipitated) sources of NUCKS.; IP - 2 - 5 µg/mg lysate; IHC - 1:1,000 - 1:5,000. Epitope retrieval with citrate buffer pH 6.0 is recommended for FFPE tissue sections.
<b>Expiration Date</b>	12 months from date of receipt.



Detection of human NUCKS by immunohistoc...



Detection of human NUCKS by western blot...