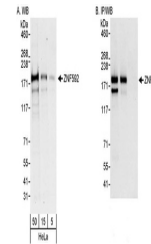


Product Datasheet

ZNF592 Antibody (orb1528237)

Description	ZNF592 Antibody
Species/Host	Rabbit
Reactivity	Human
Conjugation	Unconjugated
Tested Applications	IP, WB
Immunogen	Between 200 and 250
Target	ZNF592
Preservatives	Tris-buffered Saline containing 0.1% rAlbumin and 0.09% Sodium Azide
Form/Appearance	Whole IgG
Concentration	200 µg/ml
Storage	2 - 8°C
Note	For research use only
Application notes	Format: Whole IgG
Clonality	Polyclonal
Uniprot ID	Q92610
NCBI	NP_055445.2
Dilution Range	WB - 1:2,000 - 1:10,000; IP - 2 - 5 µg/mg lysate
Expiration Date	12 months from date of receipt.



Detection of human ZNF592 by WB and IP.S...