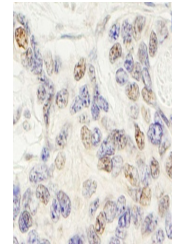


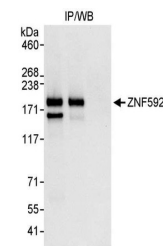
Product Datasheet

ZNF592 Antibody (orb1528234)

Description	ZNF592 Antibody
Species/Host	Rabbit
Reactivity	Human
Conjugation	Unconjugated
Tested Applications	IHC, IP
Immunogen	Between 950 and 1000
Target	ZNF592
Preservatives	Tris-citrate/phosphate buffer, pH 7 to 8 containing 0.09% Sodium Azide
Form/Appearance	Whole IgG
Concentration	1000 µg/ml
Storage	2 - 8°C
Note	For research use only
Application notes	Format: Whole IgG
Clonality	Polyclonal
Uniprot ID	Q92610
NCBI	NP_055445.2
Dilution Range	WB - Not recommended. Use rabbit anti-ZNF592 antibody A301-530A.; IP - 2 - 5 µg/mg lysate; IHC - 1:500 - 1:2,000. Epitope retrieval with citrate buffer pH 6.0 is recommended for FFPE tissue sections.
Expiration Date	12 months from date of receipt.



Detection of human ZNF592 by immunohisto...



Detection of human ZNF592 by western blo...