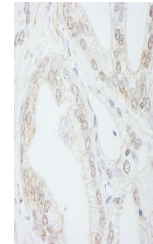


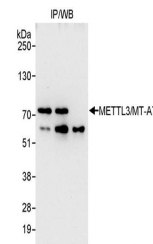
Product Datasheet

METTL3/MT-A70 Antibody (orb1528163)

Description	METTL3/MT-A70 Antibody
Species/Host	Rabbit
Reactivity	Human
Conjugation	Unconjugated
Tested Applications	IHC, IP
Immunogen	Between 530 and C-terminus
Target	METTL3/MT-A70
Preservatives	Tris-citrate/phosphate buffer, pH 7 to 8 containing 0.09% Sodium Azide
Form/Appearance	Whole IgG
Concentration	1000 µg/ml
Storage	2 - 8°C
Note	For research use only
Application notes	Format: Whole IgG
Clonality	Polyclonal
Uniprot ID	Q86U44
NCBI	NP_062826.2
Dilution Range	WB - Not recommended. Use rabbit anti-METTL3/MT-A70 antibody A301-567A.; IP - 2 - 5 µg/mg lysate; IHC - 1:500 - 1:2,000. Epitope retrieval with citrate buffer pH 6.0 is recommended for FFPE tissue sections.
Expiration Date	12 months from date of receipt.



Detection of human METTL3/MT-A70 by immu...



Detection of human METTL3/MT-A70 by west...