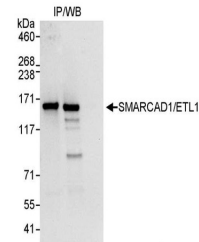


Product Datasheet

SMARCAD1/ETL1 Antibody (orb1528120)

Description	SMARCAD1/ETL1 Antibody
Species/Host	Rabbit
Reactivity	Human
Conjugation	Unconjugated
Tested Applications	IP
Immunogen	Between 1 and 50
Target	SMARCAD1/ETL1
Preservatives	Tris-citrate/phosphate buffer, pH 7 to 8 containing 0.09% Sodium Azide
Form/Appearance	Whole IgG
Concentration	1000 µg/ml
Storage	2 - 8°C
Note	For research use only
Application notes	Format: Whole IgG
Clonality	Polyclonal
Uniprot ID	Q9H4L7
NCBI	NP_064544.1
Dilution Range	WB - Not recommended. Use rabbit anti-SMARCAD1/ETL1 antibody A301-593A.; IP - 2 - 5 µg/mg lysate
Expiration Date	12 months from date of receipt.



Detection of human SMARCAD1/ETL1 by west...