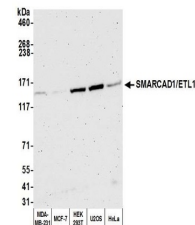


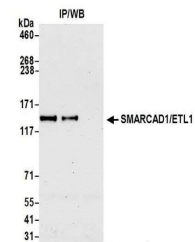
Product Datasheet

SMARCAD1/ETL1 Antibody (orb1528117)

Description	SMARCAD1/ETL1 Antibody
Species/Host	Rabbit
Reactivity	Human
Conjugation	Unconjugated
Tested Applications	IP, WB
Immunogen	Between 976 and C-terminus
Target	SMARCAD1/ETL1
Preservatives	Tris-buffered Saline containing 0.1% rAlbumin and 0.09% Sodium Azide
Form/Appearance	Whole IgG
Concentration	200 µg/ml
Storage	2 - 8°C
Note	For research use only
Application notes	Format: Whole IgG
Clonality	Polyclonal
Uniprot ID	Q9H4L7
NCBI	NP_064544.1
Dilution Range	WB - 1:2,000 - 1:10,000; IP - 2 - 10 µg/mg lysate
Expiration Date	12 months from date of receipt.



Detection of human SMARCAD1/ETL1 by west...



Detection of human SMARCAD1/ETL1 by west...