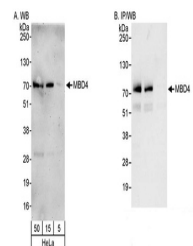


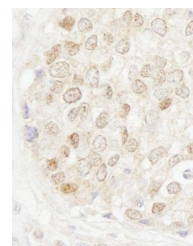
Product Datasheet

MBD4 Antibody (orb1528052)

Description	MBD4 Antibody
Species/Host	Rabbit
Reactivity	Human
Conjugation	Unconjugated
Tested Applications	IHC, IP, WB
Immunogen	Between 1 and 50
Target	MBD4
Preservatives	Tris-buffered Saline containing 0.1% rAlbumin and 0.09% Sodium Azide
Form/Appearance	Whole IgG
Concentration	200 µg/ml
Storage	2 - 8°C
Note	For research use only
Application notes	Format: Whole IgG
Clonality	Polyclonal
Uniprot ID	O95243
NCBI	NP_003916.1
Dilution Range	WB - 1:2,000 - 1:10,000; IP - 2 - 5 µg/mg lysate; IHC - 1:100 - 1:500. Epitope retrieval with citrate buffer pH 6.0 is recommended for FFPE tissue sections.
Expiration Date	12 months from date of receipt.



Detection of human MBD4 by western blot ...



Detection of human MBD4 by immunohistochem...