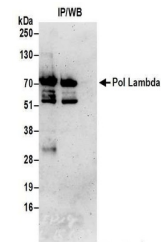


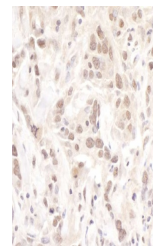
Product Datasheet

Pol Lambda Antibody (orb1528043)

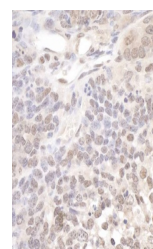
Description	Pol Lambda Antibody
Species/Host	Rabbit
Reactivity	Human, Mouse
Conjugation	Unconjugated
Tested Applications	IHC, IP
Immunogen	Between 525 and C-terminus
Target	Pol Lambda
Preservatives	Tris-citrate/phosphate buffer, pH 7 to 8 containing 0.09% Sodium Azide
Form/Appearance	Whole IgG
Concentration	1000 µg/ml
Storage	2 - 8°C
Note	For research use only
Application notes	Format: Whole IgG
Clonality	Polyclonal
Uniprot ID	Q9UGP5
NCBI	NP_037406.1
Dilution Range	WB - Not recommended. Use rabbit anti-Pol Lambda antibody A301-640A.; IP - 2 - 10 µg/mg lysate; IHC - 1:500 - 1:2,000. Epitope retrieval with citrate buffer pH 6.0 is recommended for FFPE tissue sections.
Expiration Date	12 months from date of receipt.



Detection of human Pol Lambda by western...



Detection of human Pol Lambda by immunoh...



Detection of mouse Pol Lambda by immunoh...