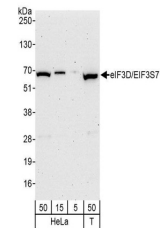


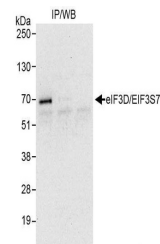
Product Datasheet

eIF3D/EIF3S7 Antibody (orb1527846)

Description	eIF3D/EIF3S7 Antibody
Species/Host	Rabbit
Reactivity	Human
Conjugation	Unconjugated
Tested Applications	IP, WB
Immunogen	Between 150 and 200
Target	eIF3D/EIF3S7
Preservatives	Tris-buffered Saline containing 0.1% rAlbumin and 0.09% Sodium Azide
Form/Appearance	Whole IgG
Concentration	1000 µg/ml
Storage	2 - 8°C
Note	For research use only
Application notes	Format: Whole IgG
Clonality	Polyclonal
Uniprot ID	O15371
NCBI	NP_003744.1
Dilution Range	WB - 1:2,000 - 1:10,000; IP - 2 - 5 µg/mg lysate
Expiration Date	12 months from date of receipt.



Detection of human eIF3D/EIF3S7 by western blotting



Detection of human eIF3D/EIF3S7 by western blotting