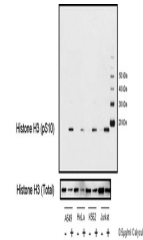


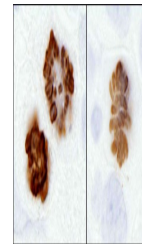
Product Datasheet

Histone H3, Phospho (S10) Antibody (orb1527687)

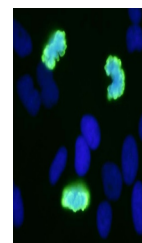
Description	Histone H3, Phospho (S10) Antibody
Species/Host	Rabbit
Reactivity	Human, Mouse
Conjugation	Unconjugated
Tested Applications	FC, ICC, IHC, WB
Immunogen	Surrounding serine 10
Target	Histone H3, Phospho (S10)
Preservatives	Tris-buffered Saline containing 0.1% rAlbumin and 0.09% Sodium Azide
Form/Appearance	Whole IgG
Concentration	200 µg/ml
Storage	2 - 8°C
Note	For research use only
Application notes	Format: Whole IgG
Clonality	Polyclonal
Uniprot ID	P68431
NCBI	NP_003520.1
Dilution Range	WB - 1:5,000 - 1:10,000; IHC - 1:2,000 - 1:10,000. Epitope retrieval with citrate buffer pH 6.0 is recommended for FFPE tissue sections.; ICC-IF - 1:2,000 - 1:10,000. Formaldehyde fixation and permeabilization with Triton-X 100 is recommended. Acetone fixation may adversely effect staining.
Expiration Date	12 months from date of receipt.



Detection of human Phospho Histone H3 (p...



Detection of human and mouse Histone H3 ...



Detection of human Phospho Histone H3 (S...