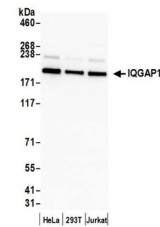


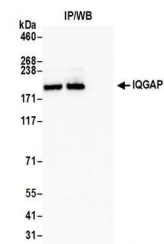
## Product Datasheet

### IQGAP1 Antibody (orb1527502)

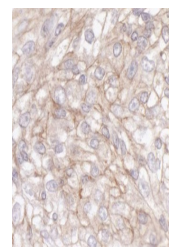
|                            |   |
|----------------------------|---|
| <b>Description</b>         | IQGAP1 Antibody   |
| <b>Species/Host</b>        | Rabbit  |
| <b>Reactivity</b>          | Human   |
| <b>Conjugation</b>         | Unconjugated  |
| <b>Tested Applications</b> | IHC, IP, WB   |
| <b>Immunogen</b>           | Between 1 and 50  |
| <b>Target</b>              | IQGAP1  |
| <b>Preservatives</b>       | Tris-buffered Saline containing 0.1% rAlbumin and 0.09% Sodium Azide  |
| <b>Form/Appearance</b>     | Whole IgG   |
| <b>Concentration</b>       | 200 µg/ml   |
| <b>Storage</b>             | 2 - 8°C   |
| <b>Note</b>                | For research use only   |
| <b>Application notes</b>   | Format: Whole IgG   |
| <b>Clonality</b>           | Polyclonal  |
| <b>Uniprot ID</b>          | <a href="#">P46940</a>  |
| <b>NCBI</b>                | <a href="#">NP_003861.1</a>   |
| <b>Dilution Range</b>      | WB - 1:2,000 - 1:10,000; IP - 2 - 10 µg/mg lysate; IHC - 1:100 - 1:500. Epitope retrieval with citrate buffer pH 6.0 is recommended for FFPE tissue sections. |
| <b>Expiration Date</b>     | 12 months from date of receipt.   |



Detection of human IQGAP1 by western blotting



Detection of human IQGAP1 by western blotting



Detection of human IQGAP1 by immunohistochemistry