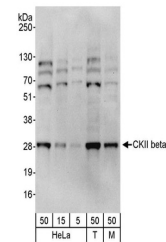


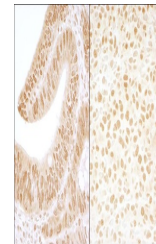
Product Datasheet

CKII beta Antibody (orb1527438)

Description	CKII beta Antibody
Species/Host	Rabbit
Reactivity	Human, Mouse
Conjugation	Unconjugated
Tested Applications	IHC, WB
Immunogen	Between 100 and 150
Target	CKII beta
Preservatives	Tris-buffered Saline containing 0.1% rAlbumin and 0.09% Sodium Azide
Form/Appearance	Whole IgG
Concentration	200 µg/ml
Storage	2 - 8°C
Note	For research use only
Application notes	Format: Whole IgG
Clonality	Polyclonal
Uniprot ID	P67870
NCBI	NP_001311.3
Dilution Range	WB - 1:2,000 - 1:10,000; IP - Not recommended. Use rabbit anti-CKII beta antibody A301-984A.; IHC - 1:500 - 1:2,000. Epitope retrieval with Tris-EDTA pH 9.0 is recommended for FFPE tissue sections.
Expiration Date	12 months from date of receipt.



Detection of human and mouse CKII beta b...



Detection of human and mouse CKII beta b...