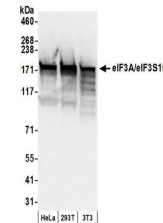


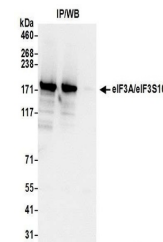
Product Datasheet

eIF3A/eIF3S10 Antibody (orb1527405)

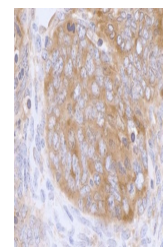
Description	eIF3A/eIF3S10 Antibody
Species/Host	Rabbit
Reactivity	Human, Mouse
Conjugation	Unconjugated
Tested Applications	IHC, IP, WB
Immunogen	Between 875 and 925
Target	eIF3A/eIF3S10
Preservatives	Tris-buffered Saline containing 0.1% rAlbumin and 0.09% Sodium Azide
Form/Appearance	Whole IgG
Concentration	200 µg/ml
Storage	2 - 8°C
Note	For research use only
Application notes	Format: Whole IgG
Clonality	Polyclonal
Uniprot ID	Q14152
NCBI	NP_003741.1
Dilution Range	WB - 1:2,000 - 1:10,000; IP - 2 - 10 µg/mg lysate; IHC - 1:100 - 1:500. Epitope retrieval with citrate buffer pH 6.0 or Tris-EDTA pH 9.0 is recommended for FFPE tissue sections.
Expiration Date	12 months from date of receipt.



Detection of human and mouse eIF3A/eIF3S10



Detection of human eIF3A/eIF3S10 by west...



Detection of mouse eIF3A/eIF3S10 by immu...