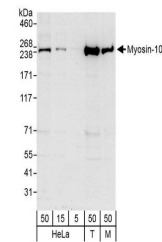


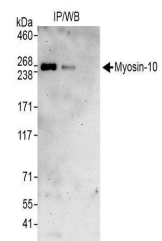
## Product Datasheet

### Myosin-10 Antibody (orb1527335)

<b>Description</b>	Myosin-10 Antibody
<b>Species/Host</b>	Rabbit
<b>Reactivity</b>	Human, Mouse
<b>Conjugation</b>	Unconjugated
<b>Tested Applications</b>	WB
<b>Immunogen</b>	Between 1926 and C-terminus
<b>Target</b>	Myosin-10
<b>Preservatives</b>	Tris-citrate/phosphate buffer, pH 7 to 8 containing 0.09% Sodium Azide
<b>Form/Appearance</b>	Whole IgG
<b>Concentration</b>	1000 µg/ml
<b>Storage</b>	2 - 8°C
<b>Note</b>	For research use only
<b>Application notes</b>	Format: Whole IgG
<b>Clonality</b>	Polyclonal
<b>Uniprot ID</b>	<b>P35580</b>
<b>NCBI</b>	<b>NP_005955.1</b>
<b>Dilution Range</b>	WB - 1:2,000 - 1:10,000; IP - Not recommended. Use rabbit anti-Myosin-10 antibody A302-042A.
<b>Expiration Date</b>	12 months from date of receipt.



Detection of human and mouse Myosin-10 b...



Detection of human Myosin-10 by western ...