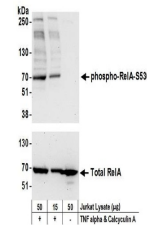


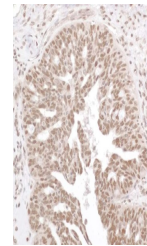
Product Datasheet

RelA, Phospho (S536) Antibody (orb1527302)

Description	RelA, Phospho (S536) Antibody
Species/Host	Rabbit
Reactivity	Human
Conjugation	Unconjugated
Tested Applications	IHC, WB
Immunogen	Surrounding serine 536
Target	RelA, Phospho (S536)
Preservatives	Tris-buffered Saline containing 0.1% rAlbumin and 0.09% Sodium Azide
Form/Appearance	Whole IgG
Concentration	200 µg/ml
Storage	2 - 8°C
Note	For research use only
Application notes	Format: Whole IgG
Clonality	Polyclonal
Uniprot ID	Q04206
NCBI	NP_068810.2
Dilution Range	WB - 1:2,000 - 1:10,000; IP - Not recommended; IHC - 1:200 - 1:1,000. Epitope retrieval with Tris-EDTA pH 9.0 is recommended for FFPE tissue sections.
Expiration Date	12 months from date of receipt.



Detection of human phospho RelA-S536 by ...



Detection of human Phospho RelA (S536) b...