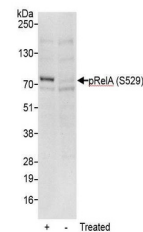


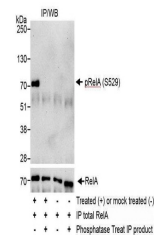
Product Datasheet

RelA, Phospho (S529) Antibody (orb1527300)

Description	RelA, Phospho (S529) Antibody
Species/Host	Rabbit
Reactivity	Human
Conjugation	Unconjugated
Tested Applications	WB
Immunogen	Surrounding serine 529
Target	RelA, Phospho (S529)
Preservatives	Tris-citrate/phosphate buffer, pH 7 to 8 containing 0.09% Sodium Azide
Form/Appearance	Whole IgG
Concentration	1000 µg/ml
Storage	2 - 8°C
Note	For research use only
Application notes	Format: Whole IgG
Clonality	Polyclonal
Uniprot ID	Q04206
NCBI	NP_068810.2
Dilution Range	WB - 1:2,000 - 1:10,000; IP - Not recommended
Expiration Date	12 months from date of receipt.



Detection of human Phospho RelA (S529) b...



Detection of human Phospho RelA (S529) b...