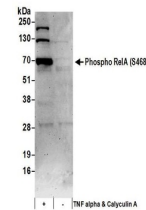


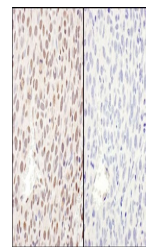
Product Datasheet

RelA, Phospho (S468) Antibody (orb1527298)

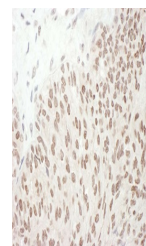
Description	RelA, Phospho (S468) Antibody
Species/Host	Rabbit
Reactivity	Human, Mouse
Conjugation	Unconjugated
Tested Applications	IHC, WB
Immunogen	Surrounding serine 468
Target	RelA, Phospho (S468)
Preservatives	Tris-citrate/phosphate buffer, pH 7 to 8 containing 0.09% Sodium Azide
Form/Appearance	Whole IgG
Concentration	1000 µg/ml
Storage	2 - 8°C
Note	For research use only
Application notes	Format: Whole IgG
Clonality	Polyclonal
Uniprot ID	Q04206
NCBI	NP_068810.2
Dilution Range	WB - 1:2,000 - 1:10,000; IP - Not recommended; IHC - 1:500 - 1:2,000. Epitope retrieval with Tris-EDTA pH 9.0 is recommended for FFPE tissue sections.
Expiration Date	12 months from date of receipt.



Detection of human Phospho RelA (S468) b...



Detection of mouse Phospho RelA (S468) b...



Detection of human Phospho RelA (S468) b...