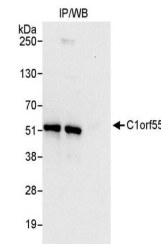


## Product Datasheet

### C1orf55 Antibody (orb1527220)

<b>Description</b>	C1orf55 Antibody
<b>Species/Host</b>	Rabbit
<b>Reactivity</b>	Human
<b>Conjugation</b>	Unconjugated
<b>Tested Applications</b>	IP
<b>Immunogen</b>	Between 401 and C-terminus
<b>Target</b>	C1orf55
<b>Preservatives</b>	Tris-citrate/phosphate buffer, pH 7 to 8 containing 0.09% Sodium Azide
<b>Form/Appearance</b>	Whole IgG
<b>Concentration</b>	1000 µg/ml
<b>Storage</b>	2 - 8°C
<b>Note</b>	For research use only
<b>Application notes</b>	Format: Whole IgG
<b>Clonality</b>	Polyclonal
<b>Uniprot ID</b>	<a href="#">Q6IQ49</a>
<b>NCBI</b>	<a href="#">NP_689821.3</a>
<b>Dilution Range</b>	WB - Not recommended. orb1527220 has not performed satisfactorily when used for WB of C1orf55 in crude preparations (e.g. whole cell lysate). This antibody can be used for WB of enriched (e.g. immunoprecipitated) sources of C1orf55.; IP - 2 - 5 µg/mg lysate
<b>Expiration Date</b>	12 months from date of receipt.



Detection of human C1orf55 by western bl...