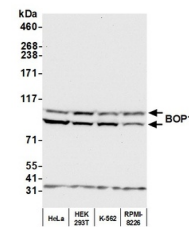


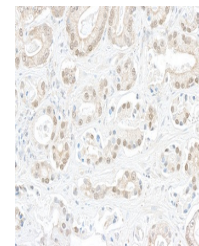
Product Datasheet

BOP1 Antibody (orb1527129)

Description	BOP1 Antibody
Species/Host	Rabbit
Reactivity	Human, Mouse
Conjugation	Unconjugated
Tested Applications	IHC, WB
Immunogen	Between 375 and 425
Target	BOP1
Preservatives	Tris-buffered Saline containing 0.1% rAlbumin and 0.09% Sodium Azide
Form/Appearance	Whole IgG
Concentration	200 µg/ml
Storage	2 - 8°C
Note	For research use only
Application notes	Format: Whole IgG
Clonality	Polyclonal
Uniprot ID	Q14137
NCBI	NP_056016.1
Dilution Range	WB - 1:2,000 - 1:10,000; IHC - 1:200 to 1:1000. Epitope retrieval with citrate buffer pH6.0 is recommended for FFPE tissue sections.
Expiration Date	12 months from date of receipt.



Detection of human BOP1 by western blot...



Detection of human BOP1 by immunohistochem...