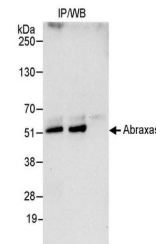


Product Datasheet

Abraxas Antibody (orb1527069)

Description	Abraxas Antibody
Species/Host	Rabbit
Reactivity	Human
Conjugation	Unconjugated
Tested Applications	IHC, IP
Immunogen	Between 359 and C-terminus
Target	Abraxas
Preservatives	Tris-citrate/phosphate buffer, pH 7 to 8 containing 0.09% Sodium Azide
Form/Appearance	Whole IgG
Concentration	1000 µg/ml
Storage	2 - 8°C
Note	For research use only
Application notes	Format: Whole IgG
Clonality	Polyclonal
Uniprot ID	Q6UWZ7
NCBI	NP_620775.2
Dilution Range	WB - Not recommended. Use rabbit anti-Abraxas antibody A302-180A.; IP - 5 - 15 µg/mg lysate; IHC - 1:500 - 1:2,000. Epitope retrieval with citrate buffer pH 6.0 is recommended for FFPE tissue sections.
Expiration Date	12 months from date of receipt.



Detection of human Abraxas by western bl...



Detection of human Abraxas by immunohist...