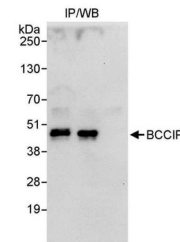


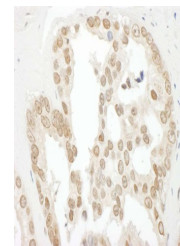
Product Datasheet

BCCIP Antibody (orb1527037)

Description	BCCIP Antibody
Species/Host	Rabbit
Reactivity	Human
Conjugation	Unconjugated
Tested Applications	IHC, IP
Immunogen	Between 264 and C-terminus
Target	BCCIP
Preservatives	Tris-citrate/phosphate buffer, pH 7 to 8 containing 0.09% Sodium Azide
Form/Appearance	Whole IgG
Concentration	1000 µg/ml
Storage	2 - 8°C
Note	For research use only
Application notes	Format: Whole IgG
Clonality	Polyclonal
Uniprot ID	Q9P287
NCBI	NP_510868.1
Dilution Range	WB - Not recommended. Use rabbit anti-BCCIP antibody A302-196A.; IP - 2 - 5 µg/mg lysate; IHC - 1:500 - 1:2,000. Epitope retrieval with citrate buffer pH 6.0 is recommended for FFPE tissue sections.
Expiration Date	12 months from date of receipt.



Detection of human BCCIP by western blot...



Detection of human BCCIP by immunohistoc...