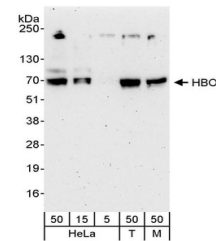


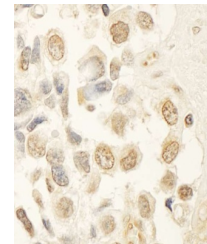
Product Datasheet

HBO Antibody (orb1527006)

Description	HBO Antibody
Species/Host	Rabbit
Reactivity	Human, Mouse
Conjugation	Unconjugated
Tested Applications	IHC, WB
Immunogen	Between 150 and 200
Target	HBO
Preservatives	Tris-buffered Saline containing 0.1% rAlbumin and 0.09% Sodium Azide
Form/Appearance	Whole IgG
Concentration	200 µg/ml
Storage	2 - 8°C
Note	For research use only
Application notes	Format: Whole IgG
Clonality	Polyclonal
Uniprot ID	O95251
NCBI	NP_008998.1
Dilution Range	WB - 1:2,000 - 1:10,000; IP - Not recommended; IHC - 1:100 - 1:500. Epitope retrieval with citrate buffer pH 6.0 is recommended for FFPE tissue sections.
Expiration Date	12 months from date of receipt.



Detection of human and mouse HBO by west...



Detection of human HBO by immunohistoche...