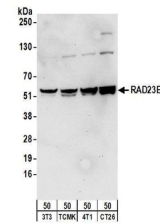


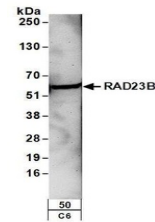
Product Datasheet

RAD23B Antibody (orb1526862)

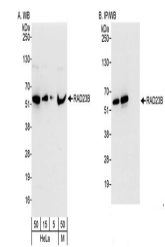
Description	RAD23B Antibody
Species/Host	Rabbit
Reactivity	Human, Mouse, Rat
Conjugation	Unconjugated
Tested Applications	IHC, IP, WB
Immunogen	Between 359 and C-terminus
Target	RAD23B
Preservatives	Tris-buffered Saline containing 0.1% rAlbumin and 0.09% Sodium Azide
Form/Appearance	Whole IgG
Concentration	200 µg/ml
Storage	2 - 8°C
Note	For research use only
Application notes	Format: Whole IgG
Clonality	Polyclonal
Uniprot ID	P54727
NCBI	NP_002865.1
Dilution Range	WB - 1:2,000 - 1:10,000; IP - 10 µg/mg lysate; IHC - 1:500 - 1:2,000. Epitope retrieval with citrate buffer pH 6.0 is recommended for FFPE tissue sections.
Expiration Date	12 months from date of receipt.



Detection of mouse RAD23B by western blotting.



Detection of rat RAD23B by western blotting.



Detection of human and mouse RAD23B by western blotting.