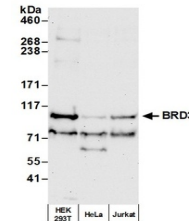


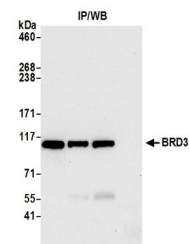
Product Datasheet

BRD3 Antibody (orb1526750)

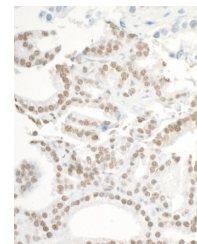
Description	BRD3 Antibody
Species/Host	Rabbit
Reactivity	Human
Conjugation	Unconjugated
Tested Applications	IHC, IP, WB
Immunogen	Between 676 and C-terminus
Target	BRD3
Preservatives	Tris-buffered Saline containing 0.1% rAlbumin and 0.09% Sodium Azide
Form/Appearance	Whole IgG
Concentration	200 µg/ml
Storage	2 - 8°C
Note	For research use only
Application notes	Format: Whole IgG
Clonality	Polyclonal
Uniprot ID	Q15059
NCBI	NP_031397.1
Dilution Range	WB - 1:2,000 - 1:10,000; IP - 5 - 10 µg/mg lysate; IHC - 1:100 - 1:500. Epitope retrieval with citrate buffer pH6.0 is recommended for FFPE tissue sections.
Expiration Date	12 months from date of receipt.



Detection of human BRD3 by western blot....



Detection of human BRD3 by western blot ...



Detection of human BRD3 by immunohistoch...