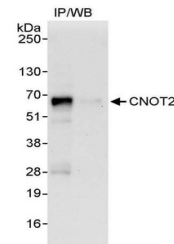


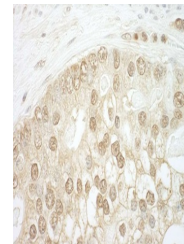
## Product Datasheet

### CNOT2 Antibody (orb1526409)

<b>Description</b>	CNOT2 Antibody
<b>Species/Host</b>	Rabbit
<b>Reactivity</b>	Human
<b>Conjugation</b>	Unconjugated
<b>Tested Applications</b>	IHC, IP
<b>Immunogen</b>	Between 490 and C-terminus
<b>Target</b>	CNOT2
<b>Preservatives</b>	Tris-citrate/phosphate buffer, pH 7 to 8 containing 0.09% Sodium Azide
<b>Form/Appearance</b>	Whole IgG
<b>Concentration</b>	1000 µg/ml
<b>Storage</b>	2 - 8°C
<b>Note</b>	For research use only
<b>Application notes</b>	Format: Whole IgG
<b>Clonality</b>	Polyclonal
<b>Uniprot ID</b>	<b>Q9NZN8</b>
<b>NCBI</b>	<b>NP_055330.1</b>
<b>Dilution Range</b>	WB - Not recommended. A302-562A has not performed satisfactorily when used for WB of CNOT2 in crude preparations (e.g. whole cell lysate). This antibody can be used for WB of enriched (e.g. immunoprecipitated) sources of CNOT2.; IP - 5 - 15 µg/mg lysate; IHC - 1:500 - 1:2,000. Epitope retrieval with citrate buffer pH 6.0 is recommended for FFPE tissue sections.
<b>Expiration Date</b>	12 months from date of receipt.



Detection of human CNOT2 by western blot...



Detection of human CNOT2 by immunohistoc...