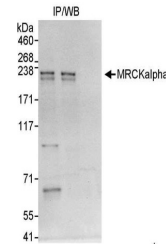


Product Datasheet

MRCKalpha Antibody (orb1526165)

Description	MRCKalpha Antibody
Species/Host	Rabbit
Reactivity	Human
Conjugation	Unconjugated
Tested Applications	IP
Immunogen	Between 1575 and 1625
Target	MRCKalpha
Preservatives	Tris-citrate/phosphate buffer, pH 7 to 8 containing 0.09% Sodium Azide
Form/Appearance	Whole IgG
Concentration	1000 µg/ml
Storage	2 - 8°C
Note	For research use only
Application notes	Format: Whole IgG
Clonality	Polyclonal
Uniprot ID	Q5VT25
NCBI	CAH71185.1
Dilution Range	WB - Not recommended. A302-693A has not performed satisfactorily when used for WB of MRCKalpha in crude preparations (e.g. whole cell lysate). This antibody can be used for WB of enriched (e.g. immunoprecipitated) sources of MRCKalpha.; IP - 2 - 5 µg/mg lysate
Expiration Date	12 months from date of receipt.



Detection of human MRCKalpha by western ...