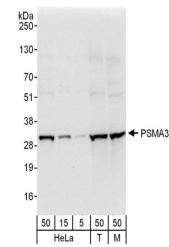


Product Datasheet

PSMA3 Antibody (orb1526063)

Description	PSMA3 Antibody
Species/Host	Rabbit
Reactivity	Human, Mouse
Conjugation	Unconjugated
Tested Applications	WB
Immunogen	Between 205 and C-terminus
Target	PSMA3
Preservatives	Tris-buffered Saline containing 0.1% rAlbumin and 0.09% Sodium Azide
Form/Appearance	Whole IgG
Concentration	200 µg/ml
Storage	2 - 8°C
Note	For research use only
Application notes	Format: Whole IgG
Clonality	Polyclonal
Uniprot ID	P25788
NCBI	NP_002779.1
Dilution Range	WB - 1:2,000 - 1:10,000; IP - Not recommended
Expiration Date	12 months from date of receipt.



Detection of human and mouse PSMA3 by we...