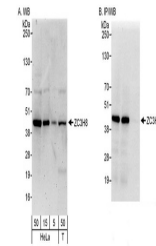


Product Datasheet

ZC3H8 Antibody (orb1525477)

Description	ZC3H8 Antibody
Species/Host	Rabbit
Reactivity	Human
Conjugation	Unconjugated
Tested Applications	IP, WB
Immunogen	Between 1 and 50
Target	ZC3H8
Preservatives	Tris-buffered Saline containing 0.1% rAlbumin and 0.09% Sodium Azide
Form/Appearance	Whole IgG
Concentration	200 µg/ml
Storage	2 - 8°C
Note	For research use only
Application notes	Format: Whole IgG
Clonality	Polyclonal
Uniprot ID	Q8N5P1
NCBI	NP_115883.2
Dilution Range	WB - 1:2,000 - 1:10,000; IP - 2 - 5 µg/mg lysate
Expiration Date	12 months from date of receipt.



Detection of human ZC3H8 by western blot...