

Product Datasheet

Rabbit anti-HSF1 Antibody, Affinity Purified (orb1525318)

Description	HSF1 Antibody
Species/Host	Rabbit
Reactivity	Human
Conjugation	Unconjugated
Tested Applications	IHC, IP, WB
Immunogen	Between 479 and C-terminus
Target	HSF1
Preservatives	Tris-buffered Saline containing 0.1% rAlbumin and 0.09% Sodium Azide
Form/Appearance	Whole IgG
Concentration	200 µg/ml
Storage	2 - 8°C
Note	For research use only
Application notes	Format: Whole IgG
Clonality	Polyclonal
Uniprot ID	Q00613
NCBI	NP_005517.1
Dilution Range	WB - 1:2,000 - 1:10,000; IP - 2 - 10 µg/mg lysate; IHC - 1:200 - 1:1,000. Epitope retrieval with citrate buffer pH 6.0 is recommended for FFPE tissue sections.

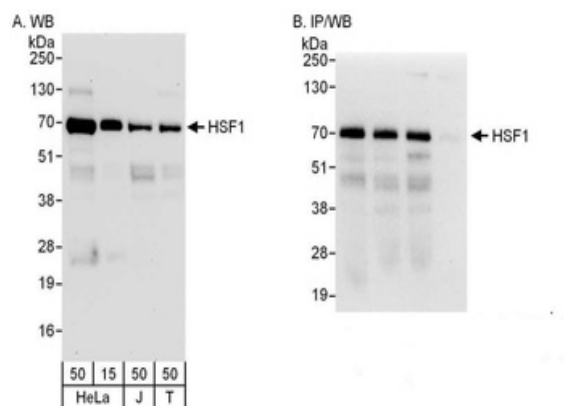
Biorbyt Ltd.

7 Signet Court, Swann's Road,
Cambridge, CB5 8LA, United Kingdom
Email: info@biorbyt.com, support@biorbyt.com
Phone: [+44 \(0\) 1223 859-353](tel:+44(0)1223859353) | Fax: [+1 \(415\) 651-8558](tel:+1(415)6518558)

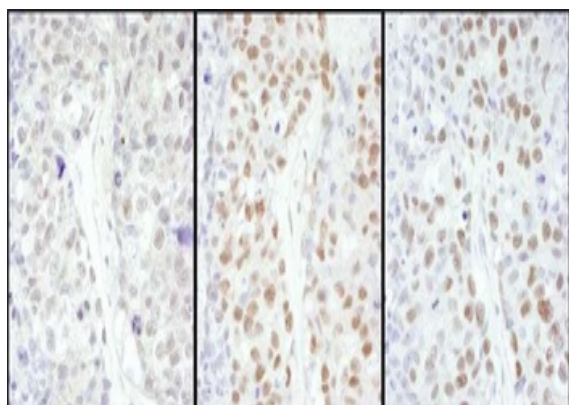
Biorbyt LLC.

68 TW Alexander Drive,
Durham, NC, 27713, United States
Email: info@biorbyt.com, support@biorbyt.com
Phone: [+1 \(415\) 906-5211](tel:+1(415)9065211) | Fax: [+1 \(415\) 651-8558](tel:+1(415)6518558)

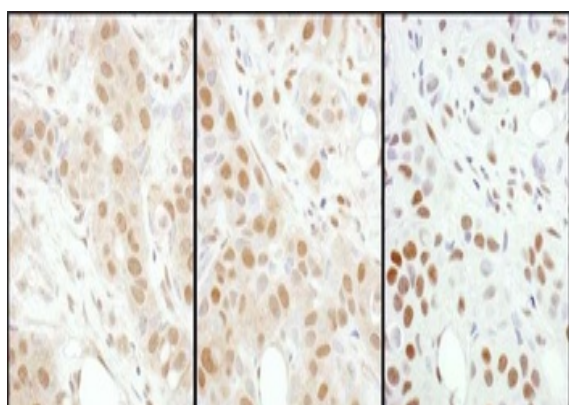
Expiration Date 12 months from date of receipt.



Detection of human HSF1 by western blot and immunoprecipitation. Samples: Whole cell lysate from HeLa (15 and 50 µg for WB; 1 mg for IP, 20% of IP loaded) , Jurkat (J; 50 µg) and HEK293T (T; 50 µg) cells. Antibodies: Affinity purified rabbit anti-HSF1 antibody orb1525318 used for WB at 0.04 µg/ml (A) and 1 µg/ml (B) and used for IP at 6 µg/mg lysate. HSF1 was also immunoprecipitated by rabbit anti-HSF1 antibodies, which recognize upstream epitopes. Detection: Chemiluminescence with exposure times of 30 seconds (A) and 3 seconds (B).



Detection of human HSF1 by immunohistochemistry. Samples: FFPE sections of human ovarian carcinoma. Antibody: Affinity purified rabbit anti-HSF1 Cat. No. orb1525322 used at a dilution of 1: 5, 000 (0.2µg/ml) (left) , Cat. No. orb1525320 used at a dilution of 1: 5, 000 (0.2µg/ml) (center) and Cat. No. orb1525318 used at a dilution of 1: 1, 000 (0.2µg/ml) (right). Detection: DAB



Detection of human HSF1 by immunohistochemistry. Samples: FFPE sections of human breast carcinoma. Antibody: Affinity purified rabbit anti-HSF1 Cat. No. orb1525322 used at a dilution of 1: 1, 000 (1µg/ml) (left) , Cat. No. orb1525320 used at a dilution of 1: 1, 000 (1µg/ml) (center) and Cat. No. orb1525318 used at a dilution of 1: 200 (1µg/ml) (right). Detection: DAB

Biorbyt Ltd.

7 Signet Court, Swann's Road,
Cambridge, CB5 8LA, United Kingdom
Email: info@biorbyt.com, support@biorbyt.com
Phone: [+44 \(0\) 1223 859-353](tel:+44(0)1223859353) | Fax: [+1 \(415\) 651-8558](tel:+1(415)6518558)

Biorbyt LLC.

68 TW Alexander Drive,
Durham, NC, 27713, United States
Email: info@biorbyt.com, support@biorbyt.com
Phone: [+1 \(415\) 906-5211](tel:+1(415)9065211) | Fax: [+1 \(415\) 651-8558](tel:+1(415)6518558)