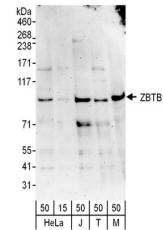


Product Datasheet

ZBTB1 Antibody (orb1525192)

Description	ZBTB1 Antibody
Species/Host	Rabbit
Reactivity	Human, Mouse
Conjugation	Unconjugated
Tested Applications	WB
Immunogen	Between 663 and C-terminus
Target	ZBTB1
Preservatives	Tris-citrate/phosphate buffer, pH 7 to 8 containing 0.09% Sodium Azide
Form/Appearance	Whole IgG
Concentration	1000 µg/ml
Storage	2 - 8°C
Note	For research use only
Application notes	Format: Whole IgG
Clonality	Polyclonal
Uniprot ID	Q9Y2K1
NCBI	NP_001116801.1
Dilution Range	WB - 1:1,000 - 1:5,000; IP - Not recommended
Expiration Date	12 months from date of receipt.



Detection of human and mouse ZBTB1 by we...