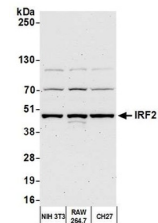


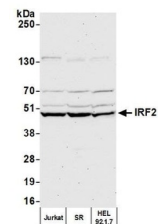
Product Datasheet

IRF2 Antibody (orb1524934)

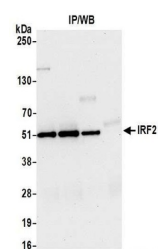
Description	IRF2 Antibody
Species/Host	Rabbit
Reactivity	Human, Mouse
Conjugation	Unconjugated
Tested Applications	IP, WB
Immunogen	Between 175 and 225
Target	IRF2
Preservatives	Tris-citrate/phosphate buffer, pH 7 to 8 containing 0.09% Sodium Azide
Form/Appearance	Whole IgG
Concentration	1000 µg/ml
Storage	2 - 8°C
Note	For research use only
Application notes	Format: Whole IgG
Clonality	Polyclonal
Uniprot ID	P23906
NCBI	NP_032417.3
Dilution Range	WB - 1:2,500-1:25,000; IP - 2 - 10 µg/mg lysate
Expiration Date	12 months from date of receipt.



Detection of mouse IRF2 by western blot....



Detection of mouse IRF2 by western blot....



Detection of human IRF2 by western blot ...