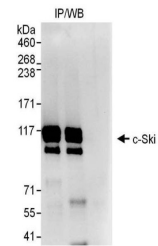


Product Datasheet

c-Ski Antibody (orb1524685)

Description	c-Ski Antibody
Species/Host	Rabbit
Reactivity	Human
Conjugation	Unconjugated
Tested Applications	IP
Immunogen	Between 450 and 500
Target	c-Ski
Preservatives	Tris-citrate/phosphate buffer, pH 7 to 8 containing 0.09% Sodium Azide
Form/Appearance	Whole IgG
Concentration	1000 µg/ml
Storage	2 - 8°C
Note	For research use only
Application notes	Format: Whole IgG
Clonality	Polyclonal
Uniprot ID	P12755
NCBI	NP_003027.1
Dilution Range	WB - Not recommended; IP - 2 - 10 µg/mg lysate
Expiration Date	12 months from date of receipt.



Detection of human c-Ski by western blot...