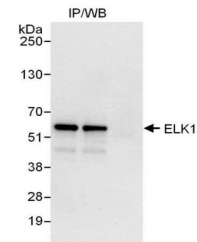


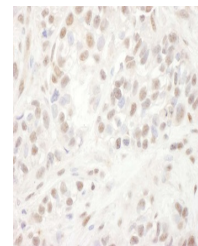
Product Datasheet

ELK1 Antibody (orb1524661)

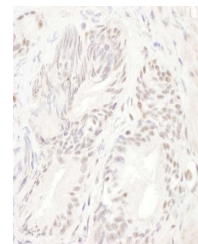
Description	ELK1 Antibody
Species/Host	Rabbit
Reactivity	Human
Conjugation	Unconjugated
Tested Applications	IHC, IP
Immunogen	Between 200 and 250
Target	ELK1
Preservatives	Tris-citrate/phosphate buffer, pH 7 to 8 containing 0.09% Sodium Azide
Form/Appearance	Whole IgG
Concentration	1000 µg/ml
Storage	2 - 8°C
Note	For research use only
Application notes	Format: Whole IgG
Clonality	Polyclonal
Uniprot ID	P19419
NCBI	NP_005220.2
Dilution Range	WB - Not recommended; IP - 2 - 10 µg/mg lysate; IHC - 1:500 - 1:2,000. Epitope retrieval with citrate buffer pH 6.0 is recommended for FFPE tissue sections.
Expiration Date	12 months from date of receipt.



Detection of human ELK1 by western blot ...



Detection of human ELK1 by immunohistoch...



Detection of human ELK1 by immunohistoch...