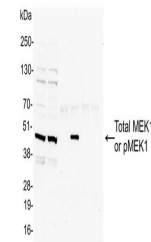


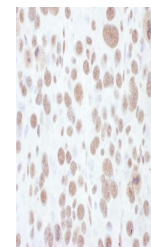
Product Datasheet

MEK1, Phospho (T286) Antibody (orb1524513)

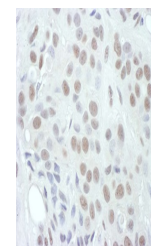
Description	MEK1, Phospho (T286) Antibody
Species/Host	Rabbit
Reactivity	Human, Mouse
Conjugation	Unconjugated
Tested Applications	IHC, IP
Immunogen	Surrounding threonine 286
Target	MEK1, Phospho (T286)
Preservatives	Tris-citrate/phosphate buffer, pH 7 to 8 containing 0.09% Sodium Azide
Form/Appearance	Whole IgG
Concentration	1000 µg/ml
Storage	2 - 8°C
Note	For research use only
Application notes	Format: Whole IgG
Clonality	Polyclonal
Uniprot ID	Q02750
NCBI	NP_002746.1
Dilution Range	WB - Not recommended; however this product has been shown to perform in western blot on immunoprecipitated MEK1; IP - 2 - 10 µg/mg lysate; IHC - 1:1,000 - 1:5,000. Epitope retrieval with citrate buffer pH 6.0 is recommended for FFPE tissue sections.
Expiration Date	12 months from date of receipt.



Detection of human Phospho-MEK1 (T286) b...



Detection of mouse Phospho-MEK1 (T286) b...



Detection of human Phospho-MEK1 (T286) b...