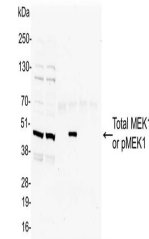


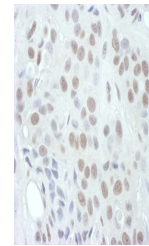
Product Datasheet

MEK1, Phospho (T286) Antibody (orb1524512)

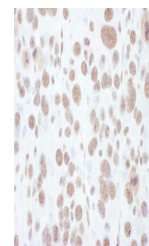
| | |
|----------------------------|--|
| Description | MEK1, Phospho (T286) Antibody |
| Species/Host | Rabbit |
| Reactivity | Human, Mouse |
| Conjugation | Unconjugated |
| Tested Applications | IHC, IP |
| Immunogen | Surrounding threonine 286 |
| Target | MEK1, Phospho (T286) |
| Preservatives | Tris-citrate/phosphate buffer, pH 7 to 8 containing 0.09% Sodium Azide |
| Form/Appearance | Whole IgG |
| Concentration | 1000 µg/ml |
| Storage | 2 - 8°C |
| Note | For research use only |
| Application notes | Format: Whole IgG |
| Clonality | Polyclonal |
| Uniprot ID | Q02750 |
| NCBI | NP_002746.1 |
| Dilution Range | WB - Not recommended; however this product has been shown to perform in western blot on immunoprecipitated MEK1 (i.e. IP with A302-139A, A303-610A, or A303-611A).; IP - 2 - 10 µg/mg lysate; IHC - 1:1,000 - 1:5,000. Epitope retrieval with citrate buffer pH 6.0 is recommended for FFPE tissue sections. |
| Expiration Date | 12 months from date of receipt. |



Detection of human Phospho-MEK1 (T286) b...



Detection of human Phospho-MEK1 (T286) b...



Detection of mouse Phospho-MEK1 (T286) b...