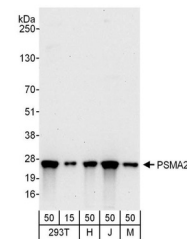


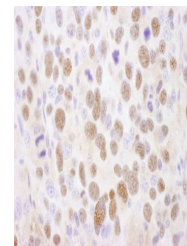
Product Datasheet

PSMA2 Antibody (orb1524128)

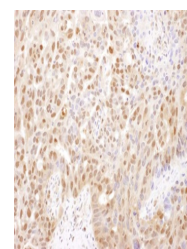
Description	PSMA2 Antibody
Species/Host	Rabbit
Reactivity	Human, Mouse
Conjugation	Unconjugated
Tested Applications	IHC, WB
Immunogen	Between 184 and C-terminus
Target	PSMA2
Preservatives	Tris-citrate/phosphate buffer, pH 7 to 8 containing 0.09% Sodium Azide
Form/Appearance	Whole IgG
Concentration	1000 µg/ml
Storage	2 - 8°C
Note	For research use only
Application notes	Format: Whole IgG
Clonality	Polyclonal
Uniprot ID	P25787
NCBI	NP_002778.1
Dilution Range	WB - 1:2,000 - 1:10,000; IP - Not recommended; IHC - 1:500 - 1:2,000. Epitope retrieval with citrate buffer pH 6.0 is recommended for FFPE tissue sections.
Expiration Date	12 months from date of receipt.



Detection of human and mouse PSMA2 by we...



Detection of mouse PSMA2 by immunohistoc...



Detection of human PSMA2 by immunohistoc...