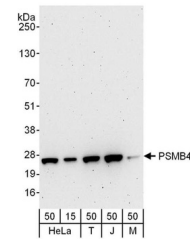


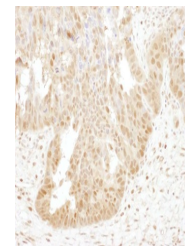
Product Datasheet

PSMB4 Antibody (orb1524123)

Description	PSMB4 Antibody
Species/Host	Rabbit
Reactivity	Human, Mouse
Conjugation	Unconjugated
Tested Applications	IHC, WB
Immunogen	Between 214 and C-terminus
Target	PSMB4
Preservatives	Tris-citrate/phosphate buffer, pH 7 to 8 containing 0.09% Sodium Azide
Form/Appearance	Whole IgG
Concentration	1000 µg/ml
Storage	2 - 8°C
Note	For research use only
Application notes	Format: Whole IgG
Clonality	Polyclonal
Uniprot ID	P28070
NCBI	NP_002787.2
Dilution Range	WB - 1:2,000 - 1:10,000; IP - Not recommended; IHC - 1:1,000 - 1:5,000. Epitope retrieval with citrate buffer pH 6.0 is recommended for FFPE tissue sections.
Expiration Date	12 months from date of receipt.



Detection of human and mouse PSMB4 by we...



Detection of human PSMB4 by immunohistoc...