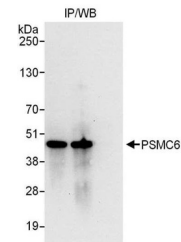


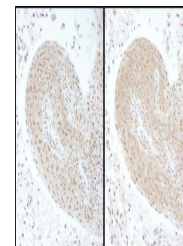
Product Datasheet

PSMC6 Antibody (orb1524115)

Description	PSMC6 Antibody
Species/Host	Rabbit
Reactivity	Human
Conjugation	Unconjugated
Tested Applications	IHC, IP
Immunogen	Between 275 and 325
Target	PSMC6
Preservatives	Tris-citrate/phosphate buffer, pH 7 to 8 containing 0.09% Sodium Azide
Form/Appearance	Whole IgG
Concentration	1000 µg/ml
Storage	2 - 8°C
Note	For research use only
Application notes	Format: Whole IgG
Clonality	Polyclonal
Uniprot ID	P62333
NCBI	AAB61616.1
Dilution Range	WB - Not recommended; IP - 2 - 10 µg/mg lysate; IHC - 1:500 - 1:2,000. Epitope retrieval with citrate buffer pH 6.0 is recommended for FFPE tissue sections.
Expiration Date	12 months from date of receipt.



Detection of human PSMC6 by western blot...



Detection of human PSMC6 by immunohistoc...