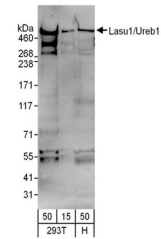


Product Datasheet

Lasu1/Ureb1 Antibody (orb1524093)

| | |
|----------------------------|--|
| Description | Lasu1/Ureb1 Antibody |
| Species/Host | Goat |
| Reactivity | Human |
| Conjugation | Unconjugated |
| Tested Applications | WB |
| Immunogen | Between 2275 and 2325 |
| Target | Lasu1/Ureb1 |
| Preservatives | Tris-citrate/phosphate buffer, pH 7 to 8 containing 0.09% Sodium Azide |
| Form/Appearance | Whole IgG |
| Concentration | 1000 µg/ml |
| Storage | 2 - 8°C |
| Note | For research use only |
| Application notes | Format: Whole IgG |
| Clonality | Polyclonal |
| Uniprot ID | Q7Z6Z7 |
| NCBI | NP_113584.3 |
| Dilution Range | WB - 1:500 - 1:2,500; IP - Not recommended |
| Expiration Date | 12 months from date of receipt. |



Detection of human Lasu1/Ureb1 by wester...