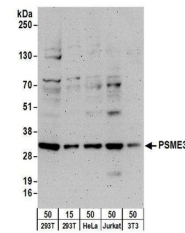


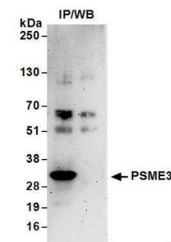
Product Datasheet

PSME3 Antibody (orb1524008)

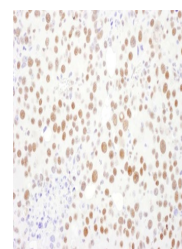
Description	PSME3 Antibody
Species/Host	Rabbit
Reactivity	Human, Mouse
Conjugation	Unconjugated
Tested Applications	IHC, IP, WB
Immunogen	Between 204 and C-terminus
Target	PSME3
Preservatives	Tris-citrate/phosphate buffer, pH 7 to 8 containing 0.09% Sodium Azide
Form/Appearance	Whole IgG
Concentration	1000 µg/ml
Storage	2 - 8°C
Note	For research use only
Application notes	Format: Whole IgG
Clonality	Polyclonal
Uniprot ID	P61289
NCBI	NP_005780.2
Dilution Range	WB - 1:500 - 1:2,500; IP - 2 - 10 µg/mg lysate; IHC - 1:500 - 1:2,000. Epitope retrieval with citrate buffer pH 6.0 is recommended for FFPE tissue sections.
Expiration Date	12 months from date of receipt.



Detection of human and mouse PSME3 by we...



Detection of human PSME3 by western blot...



Detection of mouse PSME3 by immunohistoc...